



FORD CUSTOM [23+]

ATZ

INSTALLATION GUIDE

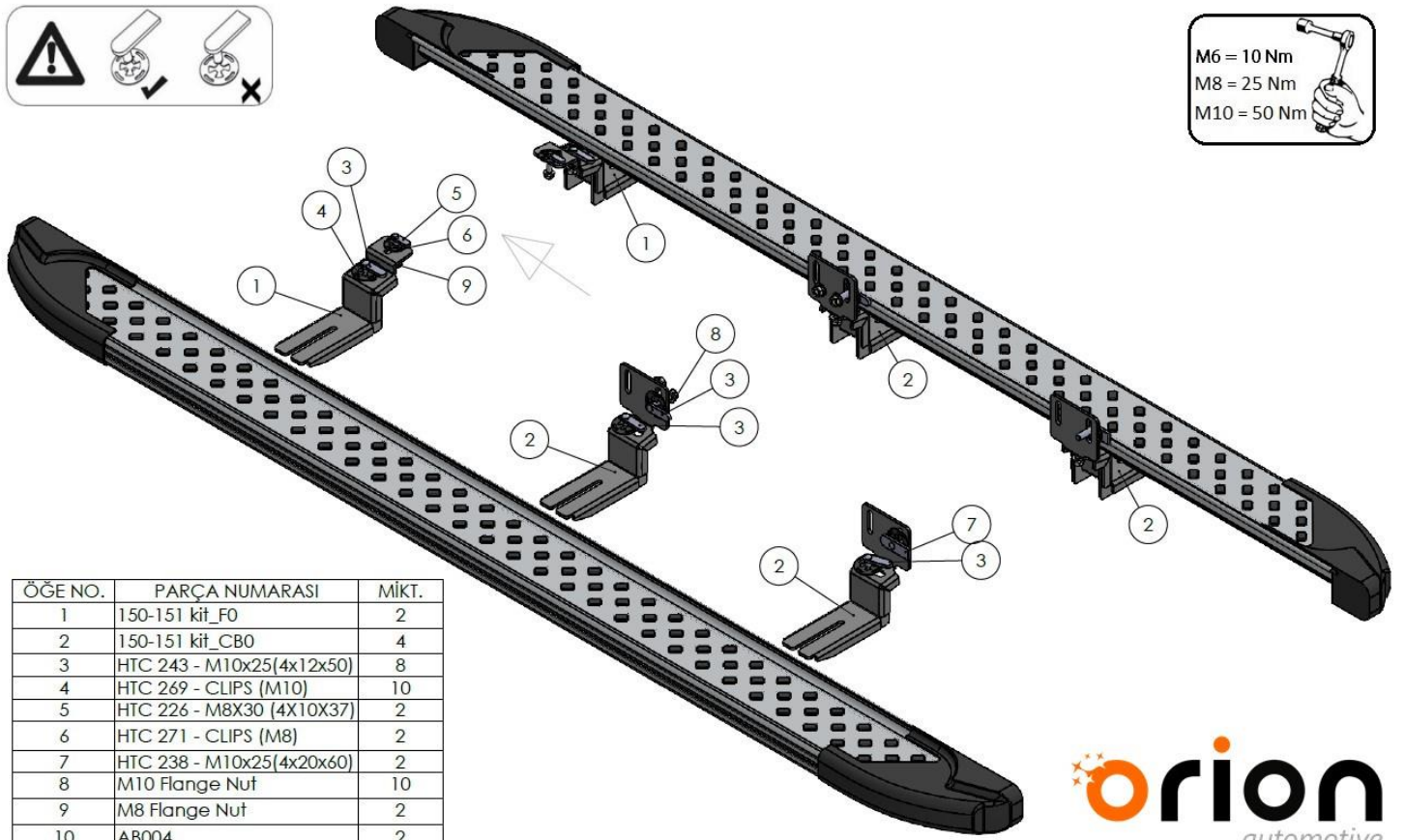
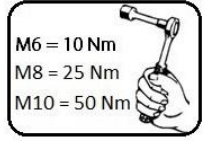


60 min.

Safety Instructions

- Carefully unpack the product and check whether the product is correct and complete. (Blows, scratches, dents, etc.)
- Two personnel should be present during the assembly process. Perform the assembly process with two people.
- Take all your safety precautions before starting the assembly.
- Take the vehicle to be assembled to the area to be mounted in a suitable and positioned position. (Lift etc.)
- While the vehicle is being taken off the lift, position it parallel to the lift and properly.
- Be sure to supply the tools required for the assembly process in advance.
- Check that all materials are complete and complete by referring to page 3 of the installation manual.
- When attaching the product to the apparatus, the forward, backward / right, left settings should be correct. Care should be taken not to collide with the mat or any other place on the vehicle.
- During the assembly of the product, carefully follow all the steps by carefully following the assembly guide that comes out of the box of the product.
- The product apparatus is designed to assemble to your vehicle without any welding. Do not weld in any way.
- Do not tighten the bolts before aligning the product to the apparatus and the vehicle.
- After making all your adjustments, tighten all the bolts.
- Do not throw away the boxes until the assembly process is completed.
- Finally, when the assembly is finished, make your checks and finish the process and throw the packaging away.

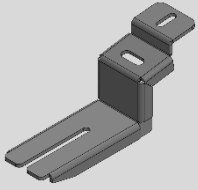
Note: Our company is not responsible for the problems caused by not following the general safety instructions above.



ÖĞE NO.	PARÇA NUMARASI	MİKT.
1	150-151 kit_F0	2
2	150-151 kit_CB0	4
3	HTC 243 - M10x25(4x12x50)	8
4	HTC 269 - CLIPS (M10)	10
5	HTC 226 - M8X30 (4X10X37)	2
6	HTC 271 - CLIPS (M8)	2
7	HTC 238 - M10x25(4x20x60)	2
8	M10 Flange Nut	10
9	M8 Flange Nut	2
10	AB004	2

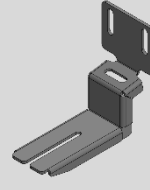
 **orion**
automotive

Box Contents



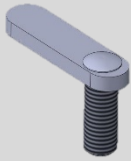
1

**DRIVER/PASSENGER SIDE
FRONT BRACKET
x2**



2

**DRIVER/PASSENGER SIDE
MIDDLE/REAR BRACKET
x4**



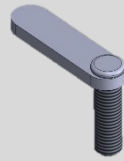
3

**HTC 243 M10x25
x8**



4

**HTC 269 M10 CLIPS
x10**



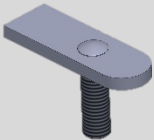
5

**HTC 226 M8x30
x2**



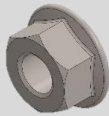
6

**HTC 271 M8 CLIPS
x2**



7

**HTC 238 – M10x25
x2**



8

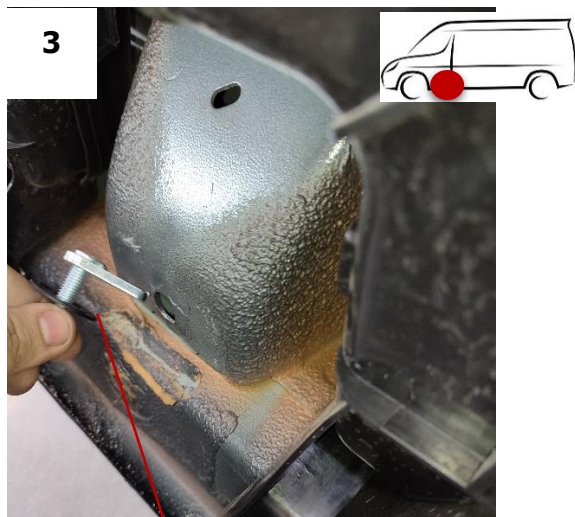
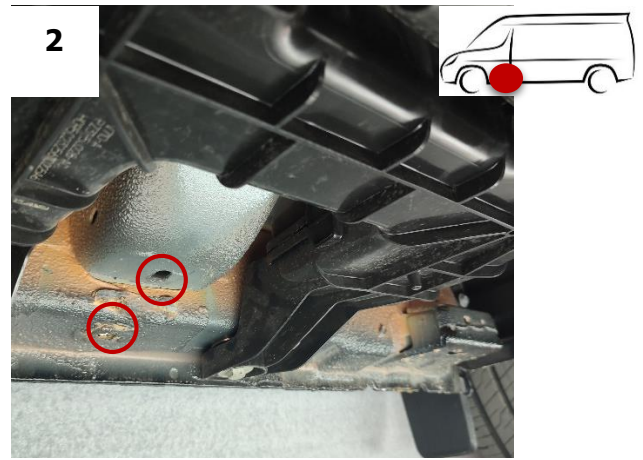
**M10 Flange Nut
x10**



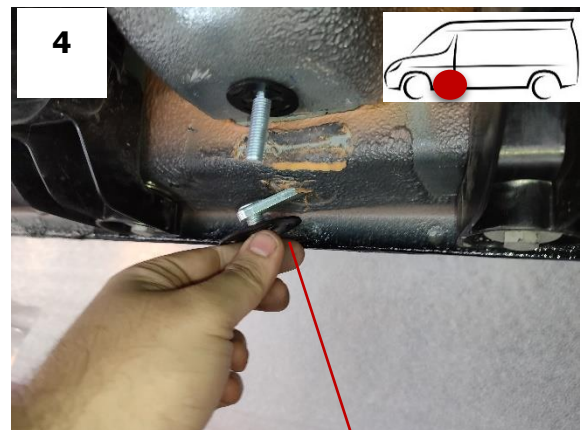
9

**M8 Flange Nut
x2**

Brackets Assembly

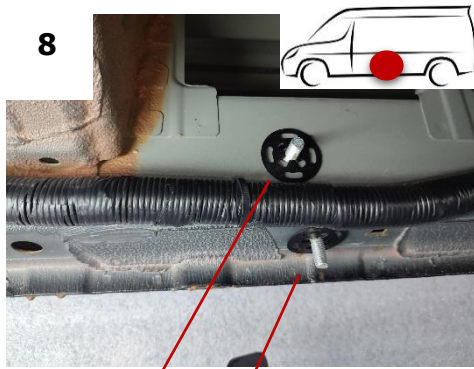
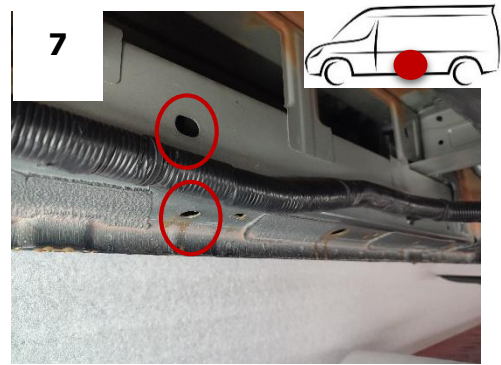
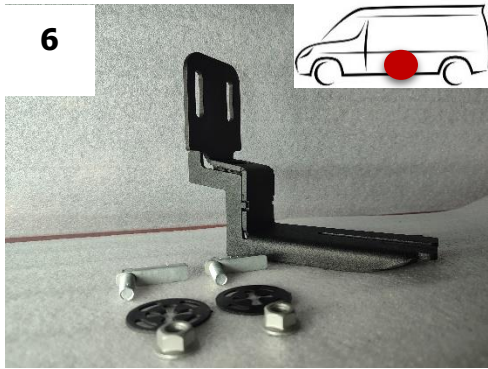


HTC 226 + HTC 271

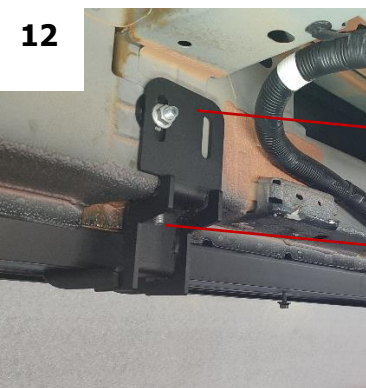
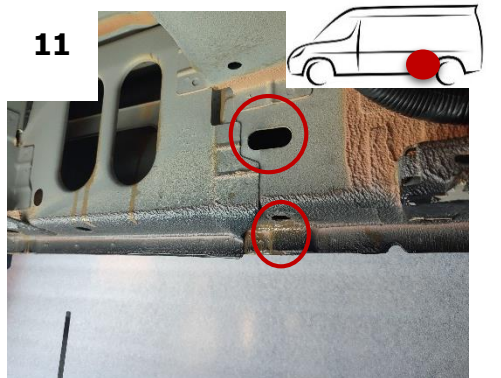
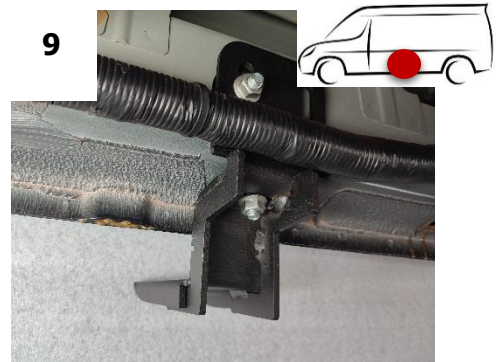


HTC 243 + HTC 269





HTC 243 + HTC 269

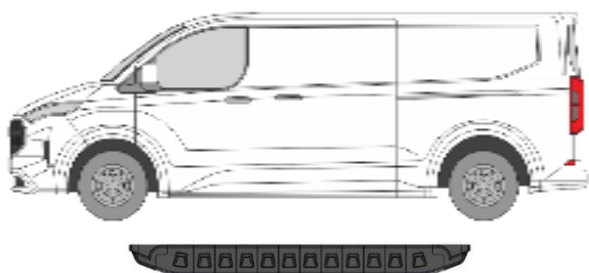


HTC 238 + HTC 269

HTC 243 + HTC 269

REPEAT FOR OTHER SIDE

Side Steps Assembly



Important! After positioning the step in the appropriate position, tighten the M8 nuts with 25 Nm and the M10 nuts with 50 Nm.

