



**FORD CUSTOM [23+]**

**OR**

**INSTALLATION GUIDE**



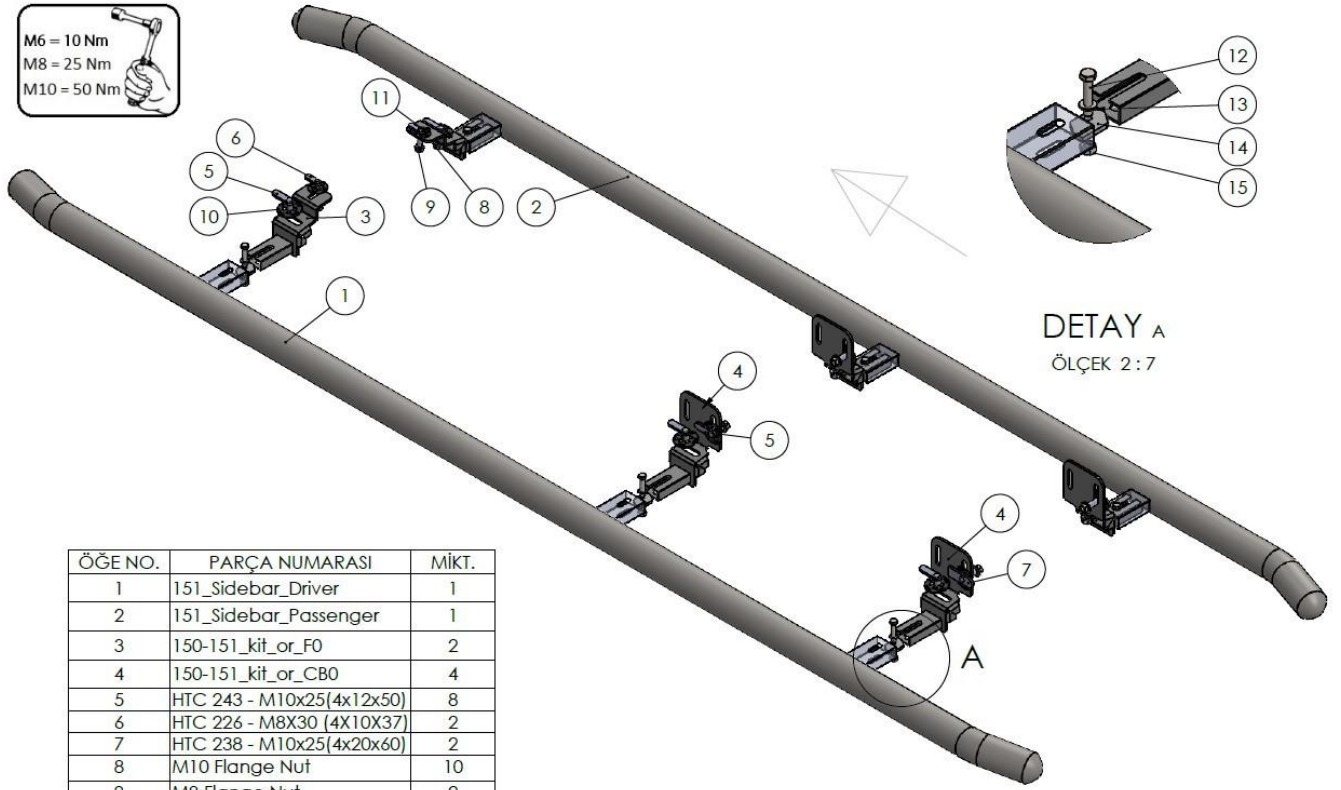
60 min.

## Safety Instructions

- Carefully unpack the product and check whether the product is correct and complete. (Blows, scratches, dents, etc.)
- Two personnel should be present during the assembly process. Perform the assembly process with two people.
- Take all your safety precautions before starting the assembly.
- Take the vehicle to be assembled to the area to be mounted in a suitable and positioned position. (Lift etc.)
- While the vehicle is being taken off the lift, position it parallel to the lift and properly.
- Be sure to supply the tools required for the assembly process in advance.
- Check that all materials are complete and complete by referring to page 3 of the installation manual.
- When attaching the product to the apparatus, the forward, backward / right, left settings should be correct. Care should be taken not to collide with the mat or any other place on the vehicle.
- During the assembly of the product, carefully follow all the steps by carefully following the assembly guide that comes out of the box of the product.
- The product apparatus is designed to assemble to your vehicle without any welding. Do not weld in any way.
- Do not tighten the bolts before aligning the product to the apparatus and the vehicle.
- After making all your adjustments, tighten all the bolts.
- Do not throw away the boxes until the assembly process is completed.
- Finally, when the assembly is finished, make your checks and finish the process and throw the packaging away.

**Note: Our company is not responsible for the problems caused by not following the general safety instructions above.**

M6 = 10 Nm  
M8 = 25 Nm  
M10 = 50 Nm

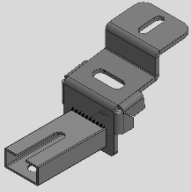


ÖĞE NO.	PARÇA NUMARASI	MİKT.
1	151_Sidebar_Driver	1
2	151_Sidebar_Passenger	1
3	150-151_kit_or_F0	2
4	150-151_kit_or_CB0	4
5	HTC 243 - M10x25(4x12x50)	8
6	HTC 226 - M8X30 (4X10X37)	2
7	HTC 238 - M10x25(4x20x60)	2
8	M10 Flange Nut	10
9	M8 Flange Nut	2
10	HTC 269 - CLIPS (M10)	10
11	HTC 271 - CLIPS (M8)	2
12	M8x40 Bolt (stainless)	6
13	M8 Pul (stainless)	6
14	HTC OR2	6
15	M8 - Lock Nut (stainless)	6



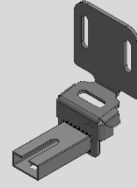
**orion**  
automotive

# Box Contents



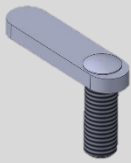
1

**DRIVER/PASSENGER SIDE  
FRONT BRACKET  
x2**



2

**DRIVER/PASSENGER SIDE  
MIDDLE/REAR BRACKET  
x4**



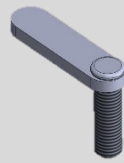
3

**HTC 243 M10x25  
x8**



4

**HTC 269 M10 CLIPS  
x10**



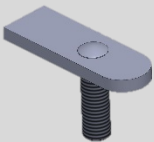
5

**HTC 226 M8x30  
x2**



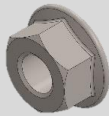
6

**HTC 271 M8 CLIPS  
x2**



7

**HTC 238 – M10x25  
x2**



8

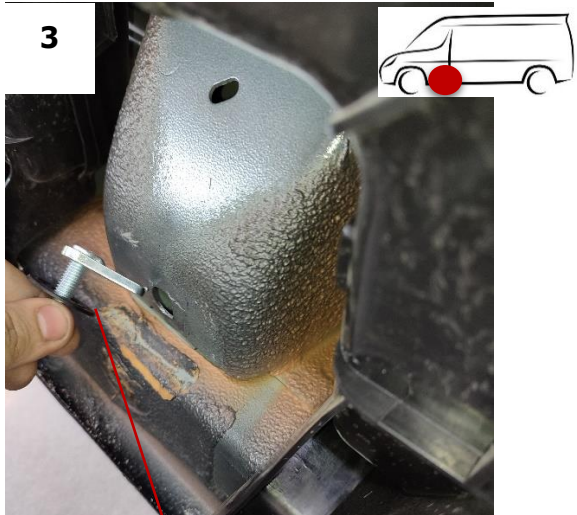
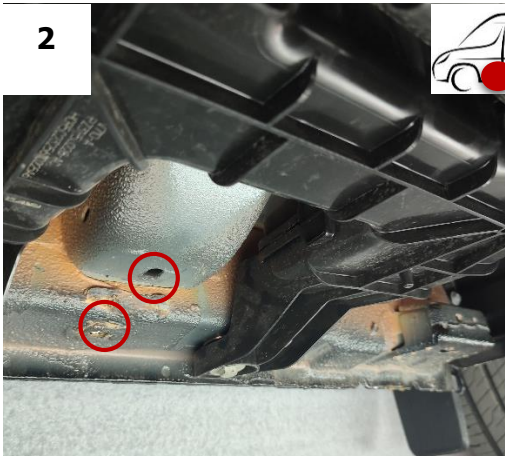
**M10 Flange Nut  
x10**



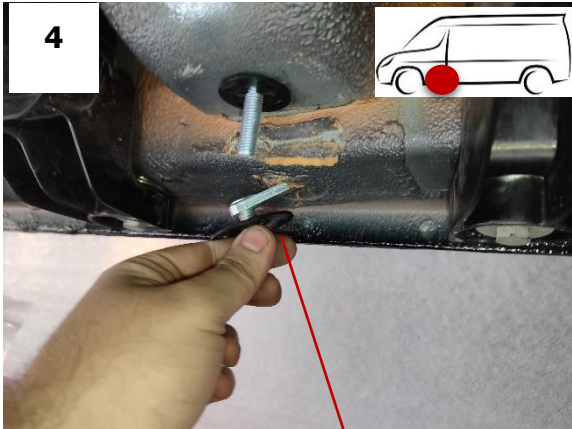
9

**M8 Flange Nut  
x2**

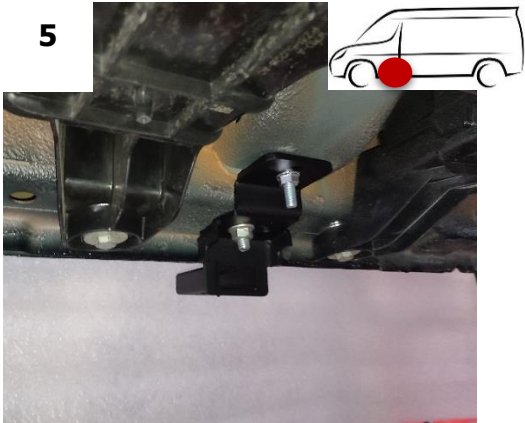
# Brackets Assembly

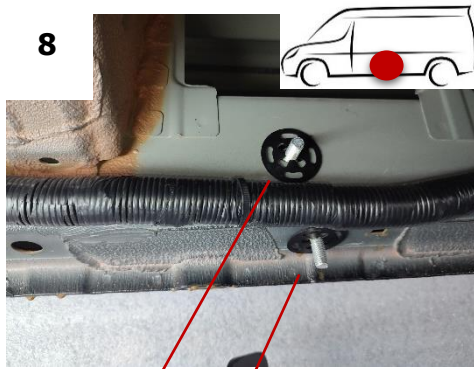
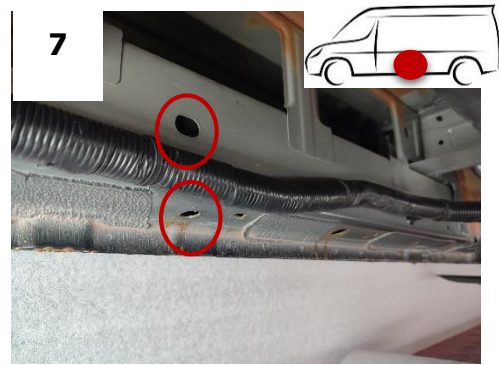
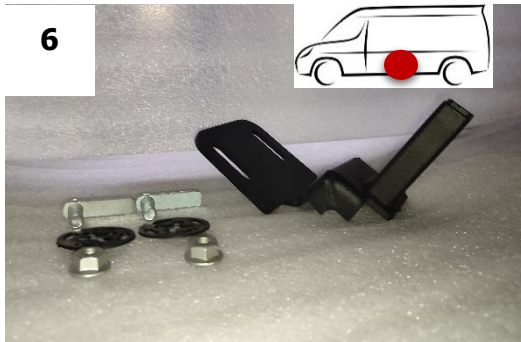


HTC 226 + HTC 271

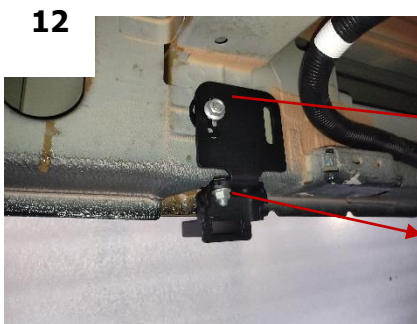
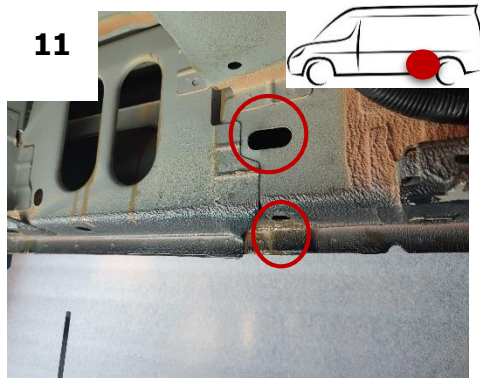


HTC 243 + HTC 269





HTC 243 + HTC 269



HTC 238 + HTC 269

HTC 243 + HTC 269

**REPEAT FOR OTHER SIDE**



## Side Steps Assembly / Sidebars



**Important!** After positioning the step in the appropriate position, tighten the M8 nuts with 25 Nm and the M10 nuts with 50 Nm.

