



Ford (e) Transit 2022+

INSTALLATION GUIDE

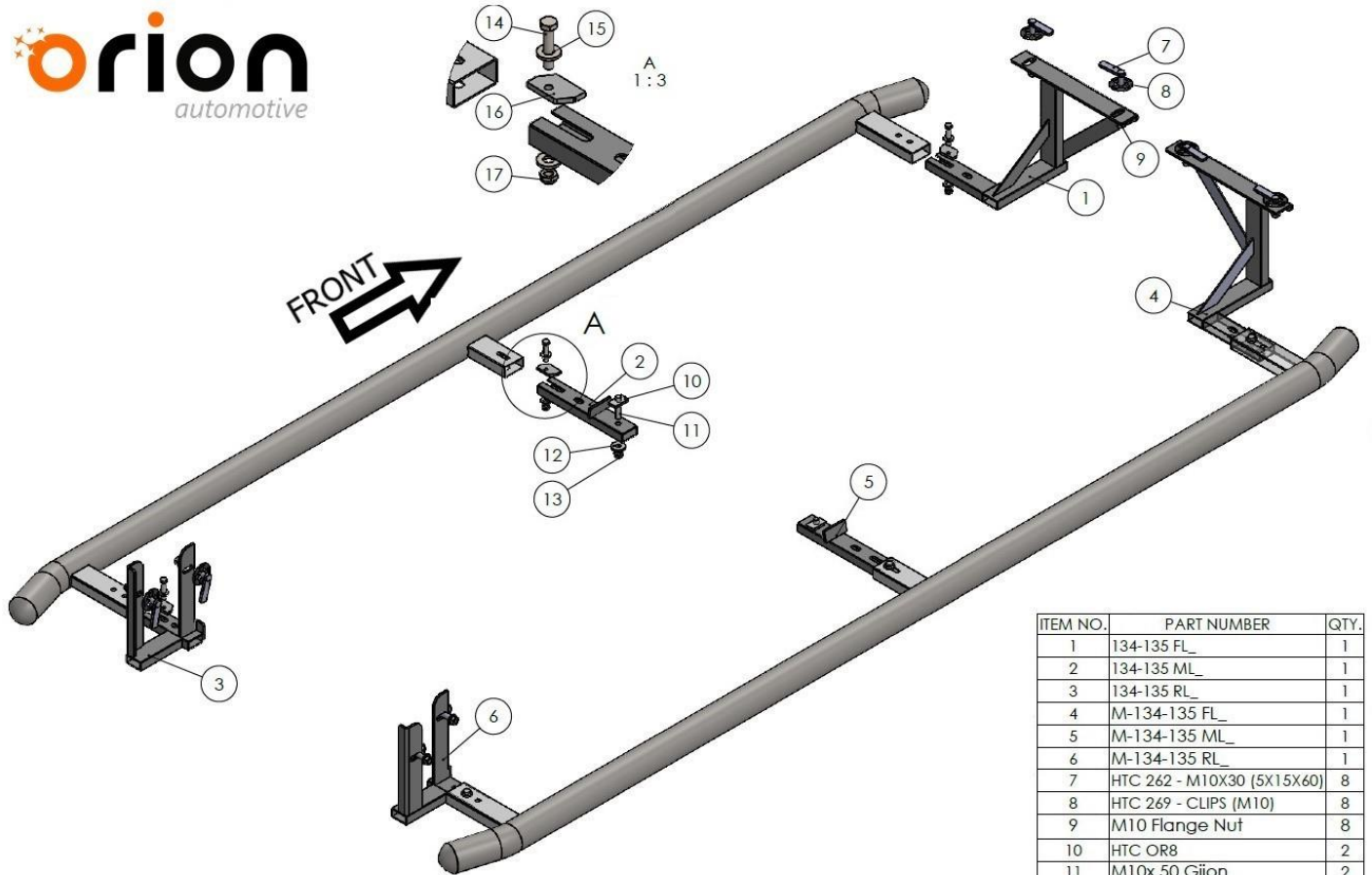


60 min.

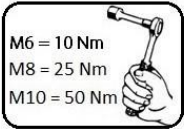
Safety Instructions

- Carefully unpack the product and check whether the product is correct and complete. (Blows, scratches, dents, etc.)
- Two personnel should be present during the assembly process. Perform the assembly process with two people.
- Take all your safety precautions before starting the assembly.
- Take the vehicle to be assembled to the area to be mounted in a suitable and positioned position. (Lift etc.)
- While the vehicle is being taken off the lift, position it parallel to the lift and properly.
- Be sure to supply the tools required for the assembly process in advance.
- Check that all materials are complete and complete by referring to page 3 of the installation manual.
- When attaching the product to the apparatus, the forward, backward / right, left settings should be correct. Care should be taken not to collide with the mat or any other place on the vehicle.
- During the assembly of the product, carefully follow all the steps by carefully following the assembly guide that comes out of the box of the product.
- The product apparatus is designed to assemble to your vehicle without any welding. Do not weld in any way.
- Do not tighten the bolts before aligning the product to the apparatus and the vehicle.
- After making all your adjustments, tighten all the bolts.
- Do not throw away the boxes until the assembly process is completed.
- Finally, when the assembly is finished, make your checks and finish the process and throw the packaging away.

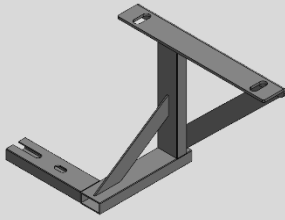
Note: Our company is not responsible for the problems caused by not following the general safety instructions above.



ITEM NO.	PART NUMBER	QTY.
1	134-135 FL_	1
2	134-135 ML_	1
3	134-135 RL_	1
4	M-134-135 FL_	1
5	M-134-135 ML_	1
6	M-134-135 RL_	1
7	HTC 262 - M10X30 (5X15X60)	8
8	HTC 269 - CLIPS (M10)	8
9	M10 Flange Nut	8
10	HTC OR8	2
11	M10x 50 Gijon	2
12	M10 Washer	2
13	M10 Self-locking Nut	2
14	M8x40 Bolt	6
15	M8 Washer	12
16	HTC OR2	6
17	M8 Self-locking Nut	6
18	134 E-transit_Sidebar	1
19	M-134 E-transit_Sidebar	1

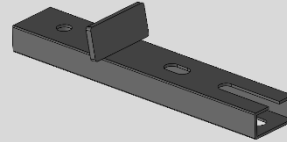


Box Contents



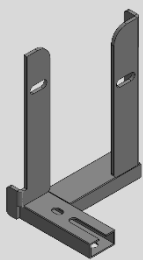
1

**DRIVER SIDE
FL BRACKET**
x1



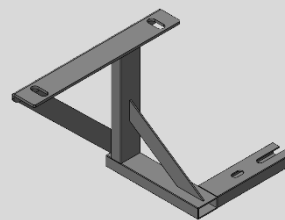
2

**DRIVER SIDE
ML BRACKET**
x1



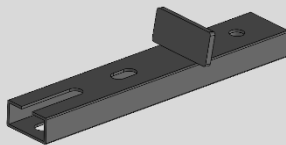
3

**DRIVER SIDE
RL BRACKET-3**
x1



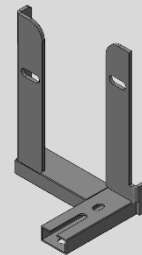
4

**PASSENGER SIDE
FL BRACKET**
x1



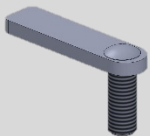
5

**PASSENGER SIDE
ML BRACKET**
x1



6

**PASSENGER SIDE
RL BRACKET**
x1



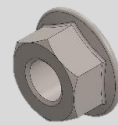
7

HTC 262 M10x30
x8



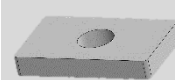
8

HTC 269
x8



9

M10 Flange Nut
x8



10

HTCOR 8
x2



11

M10x50 GIJON
x2



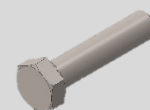
12

M10 WASHER
x2



13

**M10 SELF-LOCKING
NUT**
x2



14

M8x40 BOLT
x6



15

M8 WASHER
x2



16

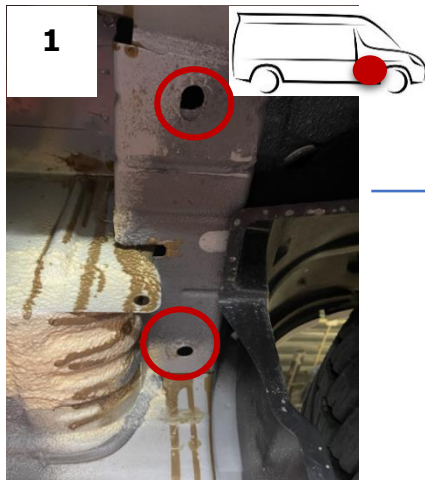
HTCOR 2
x2



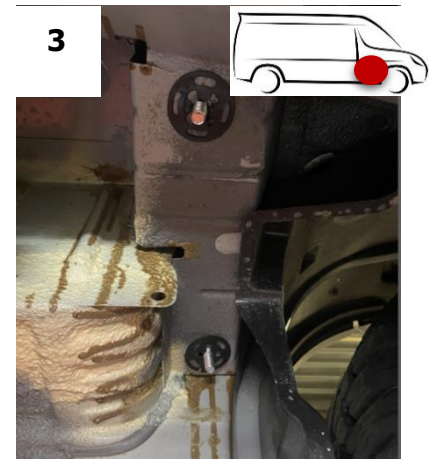
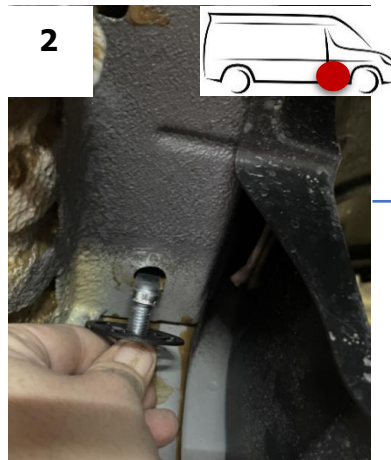
17

**M8 SELF-LOCKING
NUT**
x2

Brackets Assembly



Insert the HTC 262 bolt into the marked holes.



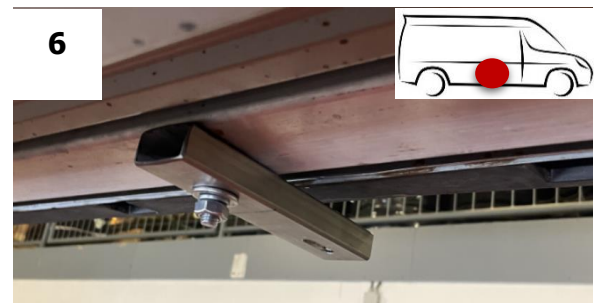
Front bracket to the vehicle with the help of M10 nut.



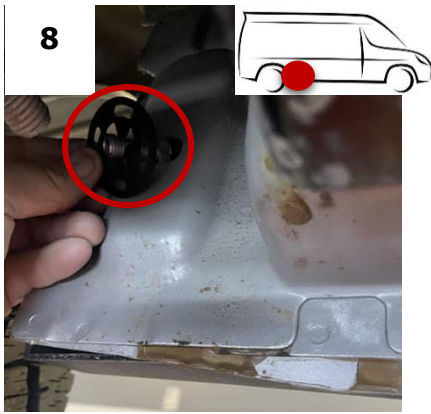
Front bracket connection is as in the image.



Insert HTC OR8 into the hole and fasten the M10x50 rod.



Middle bracket connection is as in the image.



Insert the HTC 262 bolt into the marked holes.



Rear bracket to the vehicle with the help of M10 nut.

REPEAT FOR OTHER SIDE

Side Steps Assembly



Important! After positioning the step in the appropriate position, tighten the M8 nuts with 25 Nm and the M10 nuts with 50 Nm.

