



VOLKSWAGEN ID. BUZZ 2022+

INSTALLATION GUIDE

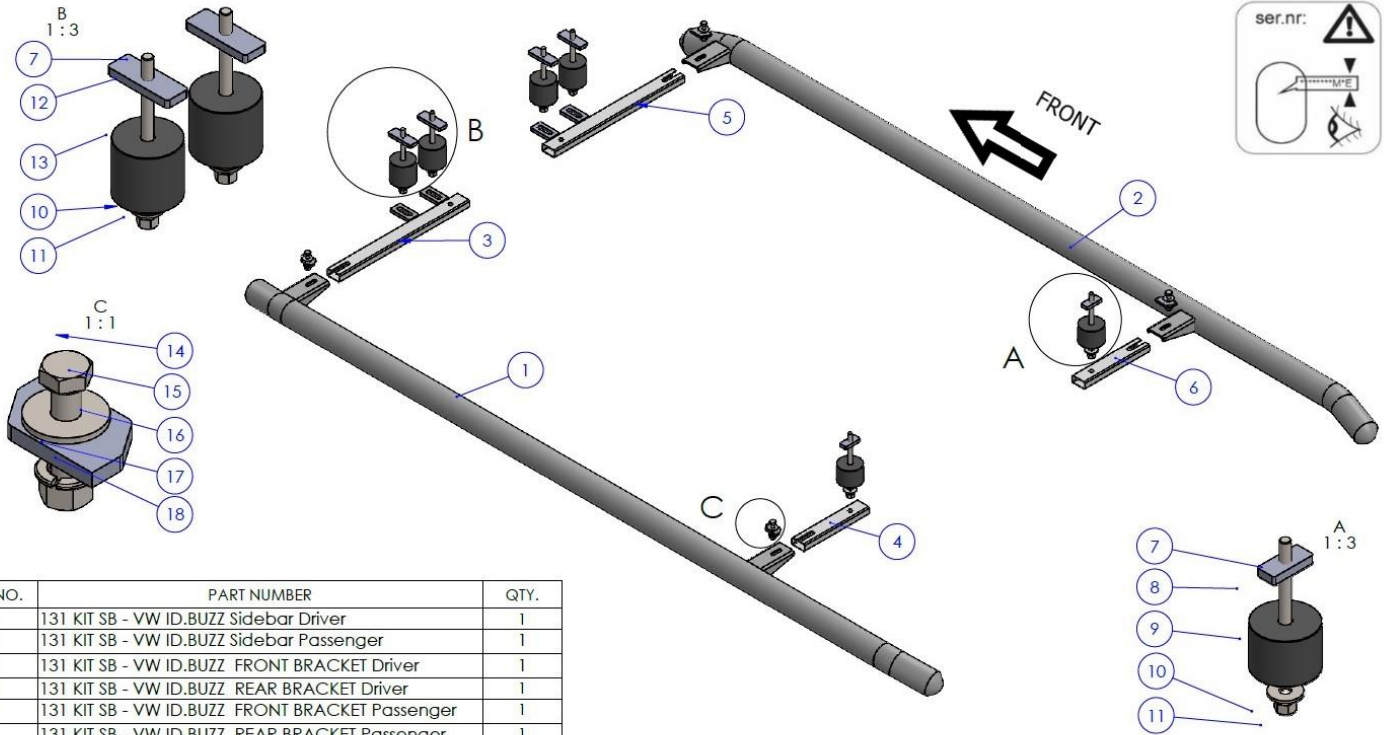


60 min.

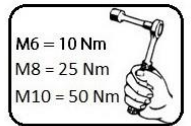
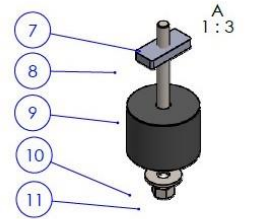
Safety Instructions

- Carefully unpack the product and check whether the product is correct and complete. (Blows, scratches, dents, etc.)
- Two personnel should be present during the assembly process. Perform the assembly process with two people.
- Take all your safety precautions before starting the assembly.
- Take the vehicle to be assembled to the area to be mounted in a suitable and positioned position. (Lift etc.)
- While the vehicle is being taken off the lift, position it parallel to the lift and properly.
- Be sure to supply the tools required for the assembly process in advance.
- Check that all materials are complete and complete by referring to page 3 of the installation manual.
- When attaching the product to the apparatus, the forward, backward / right, left settings should be correct. Care should be taken not to collide with the mat or any other place on the vehicle.
- During the assembly of the product, carefully follow all the steps by carefully following the assembly guide that comes out of the box of the product.
- The product apparatus is designed to assemble to your vehicle without any welding. Do not weld in any way.
- Do not tighten the bolts before aligning the product to the apparatus and the vehicle.
- After making all your adjustments, tighten all the bolts.
- Do not throw away the boxes until the assembly process is completed.
- Finally, when the assembly is finished, make your checks and finish the process and throw the packaging away.

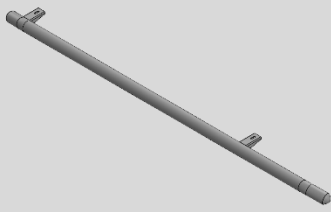
Note: Our company is not responsible for the problems caused by not following the general safety instructions above.



ITEM NO.	PART NUMBER	QTY.
1	131 KIT SB - VW ID.BUZZ Sidebar Driver	1
2	131 KIT SB - VW ID.BUZZ Sidebar Passenger	1
3	131 KIT SB - VW ID.BUZZ FRONT BRACKET Driver	1
4	131 KIT SB - VW ID.BUZZ REAR BRACKET Driver	1
5	131 KIT SB - VW ID.BUZZ FRONT BRACKET Passenger	1
6	131 KIT SB - VW ID.BUZZ REAR BRACKET Passenger	1
7	M10x100 Gijon	6
8	HTC OR11	2
9	Spacer_H 45mm_Ø60_Ø11	2
10	M10 WASHER	6
11	M10 NUT	6
12	HTC OR3	4
13	Spacer_H 55mm_Ø60_Ø11	4
14	M8x40 HEX BOLT	4
15	M8 WASHER	4
16	HTC OR2	4
17	M8 SPRING WASHER	4

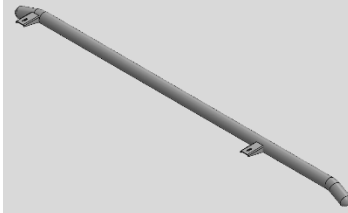


Box Contents



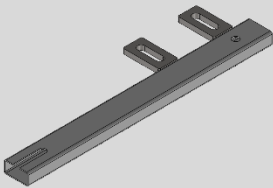
1

DRIVER SIDE 131 SB ID. BUZZ
x1



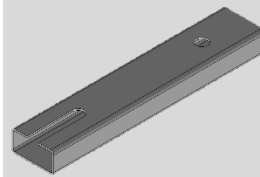
2

PASSENGER SIDE 131 SB ID. BUZZ
x1



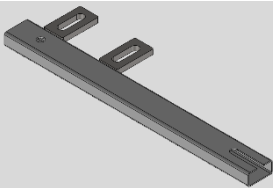
3

BRACKET DRIVER SIDE FRONT / 131 SB
x1



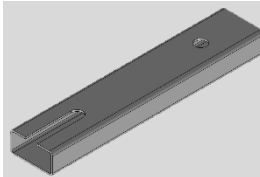
4

BRACKET DRIVER REAR / 131SB
x1



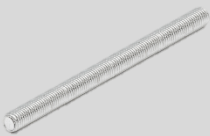
5

BRACKET DRIVER SIDE FRONT / 131 SB
x1



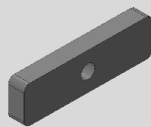
6

BRACKET DRIVER REAR / 131SB
x1



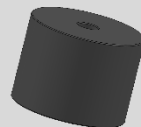
7

M10x100 Gijon
x6



8

HTC OR11
x2



9

Spacer
45mm_Ø60_Ø11
x2



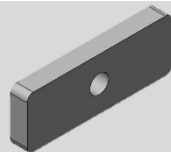
10

M10 - Washer
x6



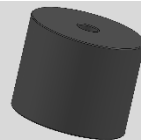
11

M10 Nut
x6



12

HTC OR3
x4



13

Spacer
55mm_Ø60_Ø11
x4



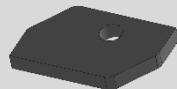
14

M8x40 - HEX BOLT
x4



15

M8 - Washer
x6



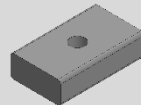
16

HTC OR2
x4



17

M8 - Spring Washer
x4



18

Poliamid Part
x2

Brackets Assembly

1



Search for covers Left + Right.

2



Remove screws and open cover.

3



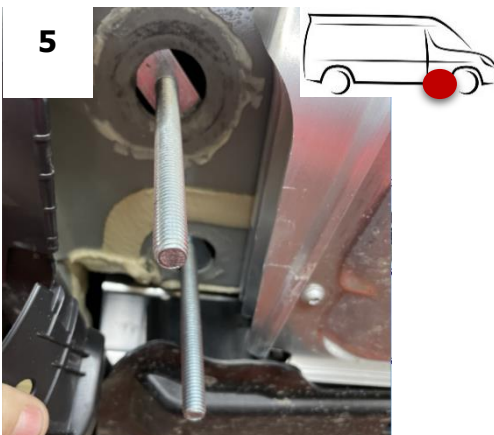
Find original holes in body of your ID.BUZZ

4



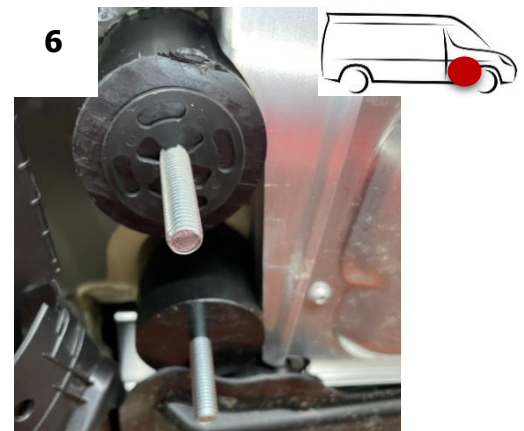
Place M10 plate 2 on every side of the vehicle. HTC OR3

5

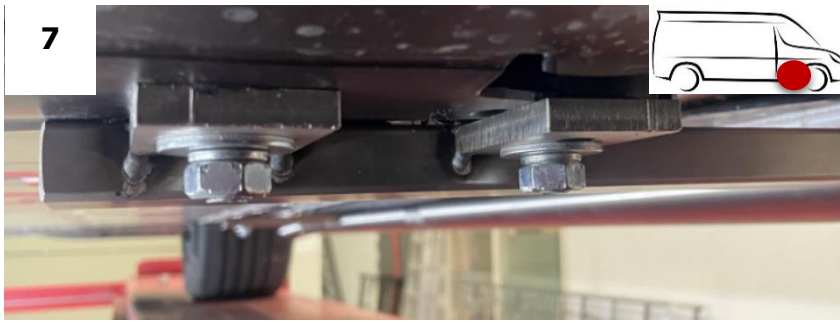


Insert M10x100 inside the plates.

6



Place spacer 55 mm high.



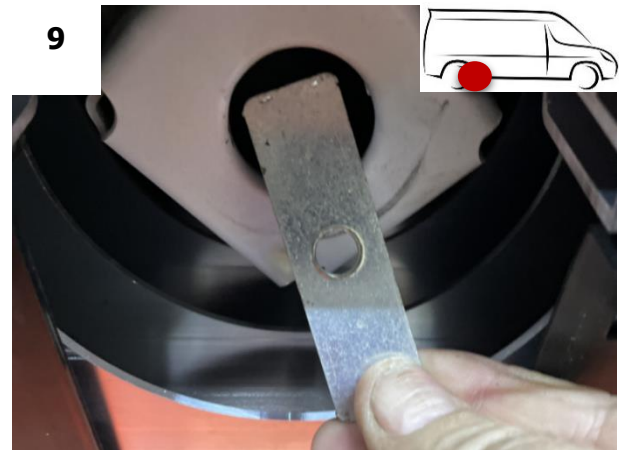
Place Front bracket and tighten by hand with M10 nuts.

Foto is Left side of the Vehicle.

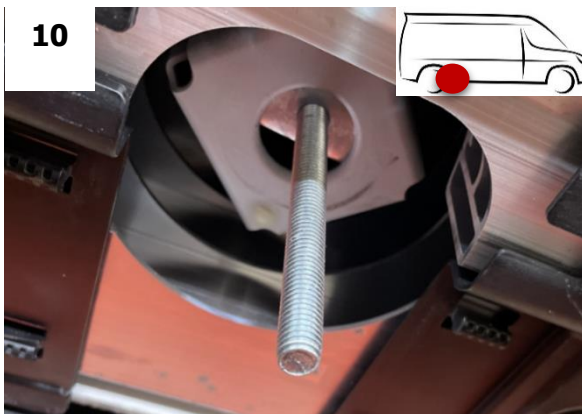
Place Right bracket in Mirror position.



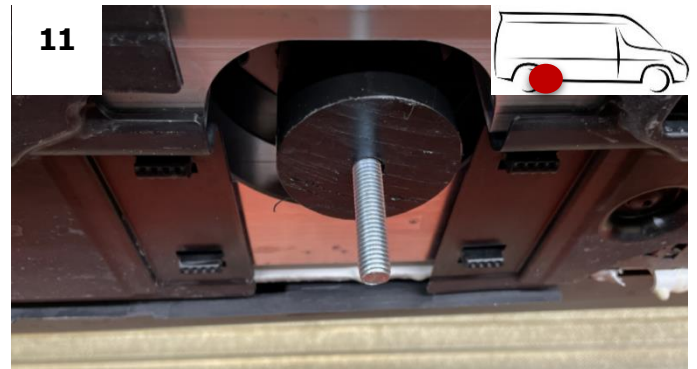
Remove cover Left + Right.



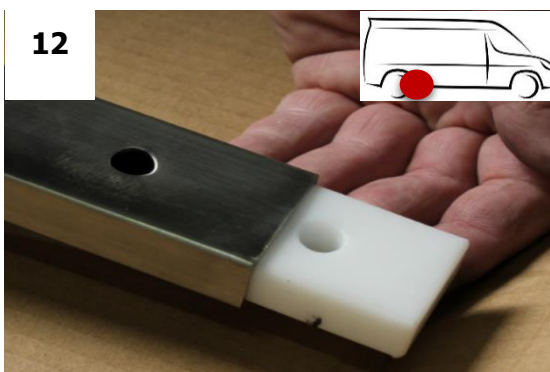
Place M10 plate (small) inside. HTC OR4



Insert M10x100 inside the plates.



Place spacer 45 mm.



Insert suport spacer inside brackets.



Place Rear Bracket on the M10 treadend and tighten (by hand) with M10 nut.

Side Steps Assembly



Place M8x40 (inox) on the sidebar with nutplate.



Place sidebar on the brackets and tighten them by hand



After positioning the sidebar, tighten the brackets to the car with correct moment.

Then position the sidebars in the correct position/straight and tighten them with the correct moment.

Place sidebar to the brackets (bolts) and tighten them with nuts and rivets.

Tighten everything with correct moment and replace bottom cover.

