



5228-29 – CITROEN BERLINGO (SWB-LWB) 2018-PRESENT

5220– CITROEN BERLINGO 2008-2017

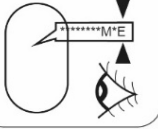
PRODUCT : 370 - OR009

Attention: In case of long wheelbase
need to drill for driver side rear brackets.

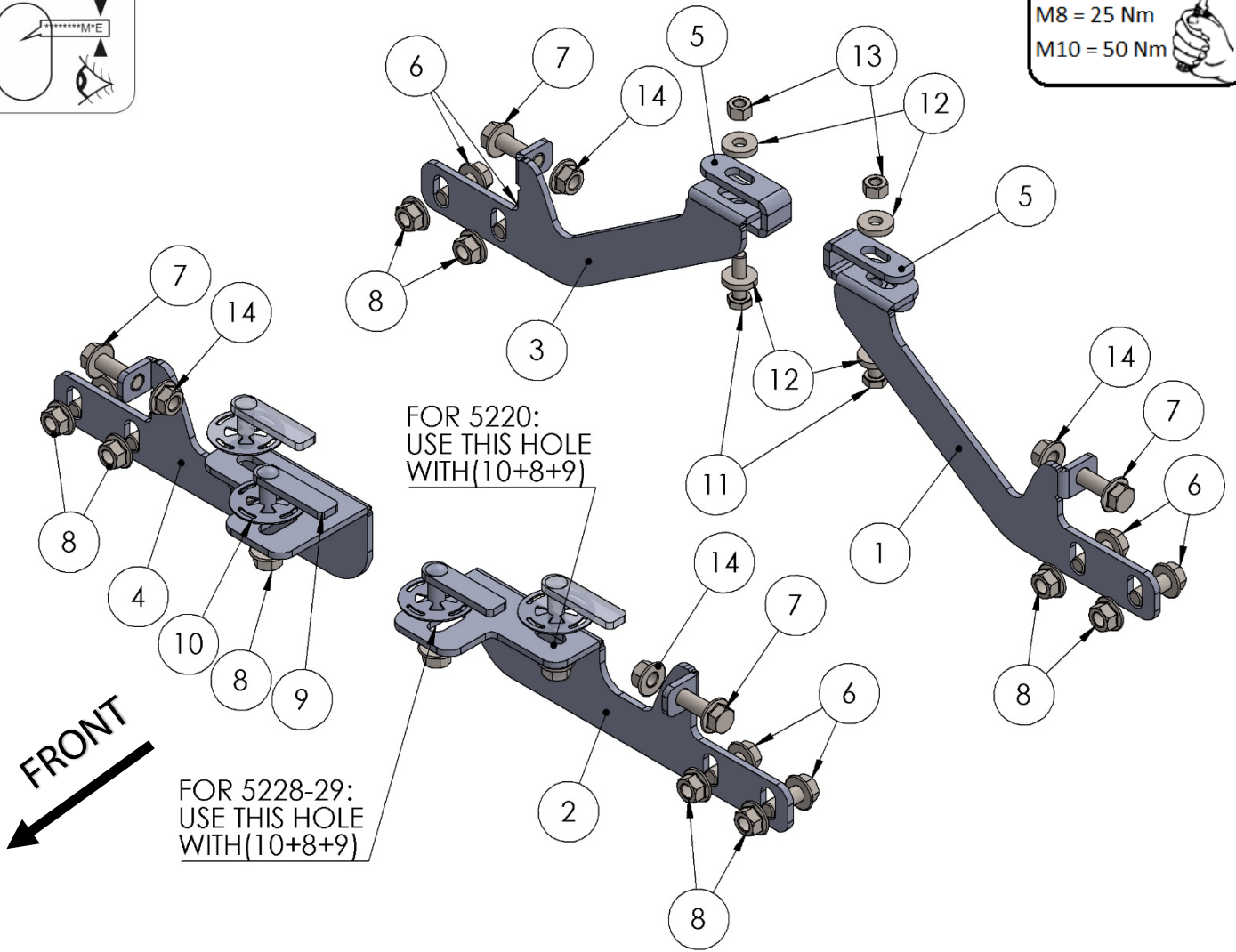


50 Min.

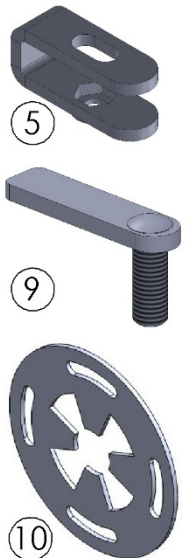
ser.nr:

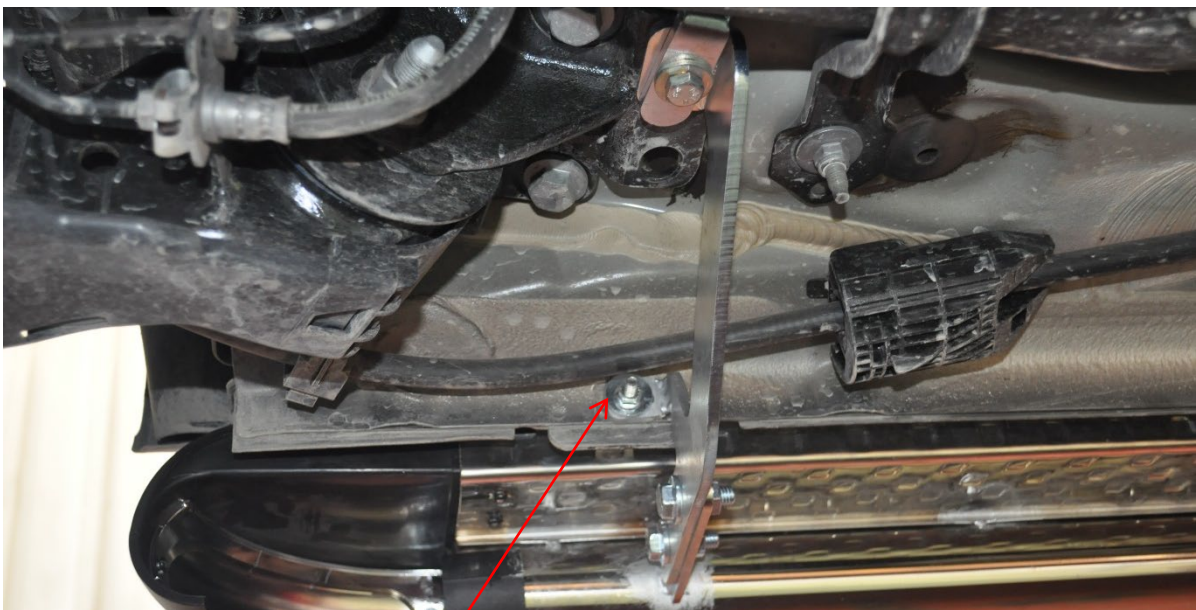
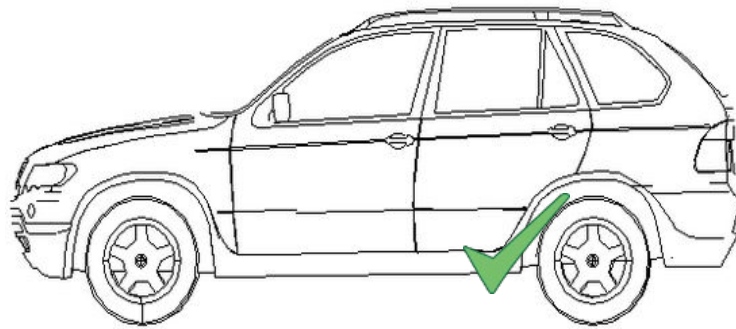
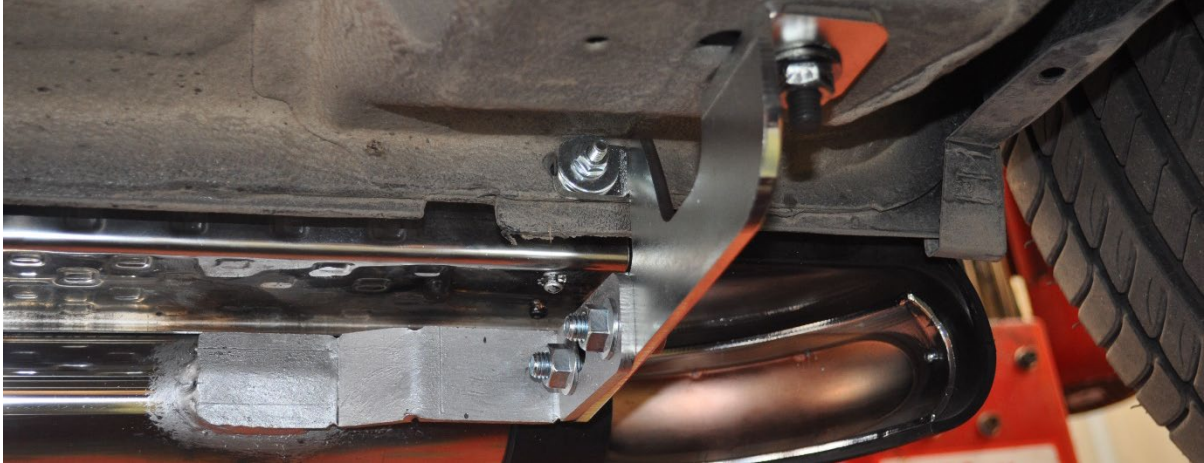
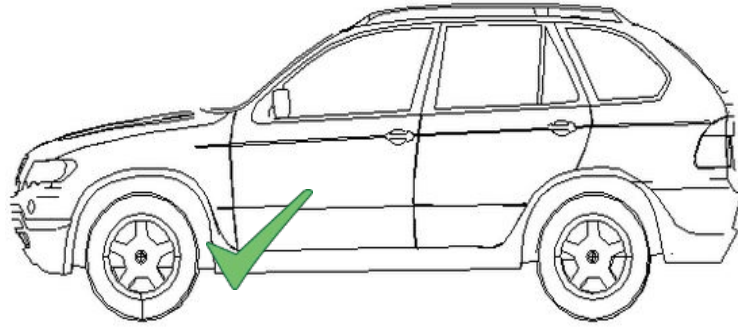


M6 = 10 Nm
M8 = 25 Nm
M10 = 50 Nm

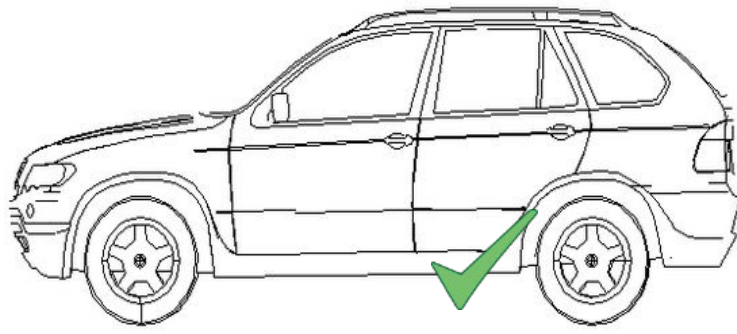


ITEM/NO	PART NAME/PARÇ A ADI	QTY/ADET
1	5228370B0_DRIVER	1
2	5228370F0_DRIVER	1
3	5228370B0_PASSENGER	1
4	5228370F0_PASSENGER	1
5	HTC 220 - M10X30 ÇUBUK TIRNAKLI CİVATA (5X14X36)	2
6	DIN 6921 - M10 x 25	8
7	DIN 6921 - M10 x 30	4
8	DIN 6923 - Flange Nut M10	10
9	HTC 262 - M10X30 (5X15X60)	2
10	HTC 269 - CLIPS (M10)	2
11	DIN 933 -BOLT M8 x 30	2
12	DIN 125 WASHER M8	4
13	DIN 934 NUT M8	2
14	DIN 6923 - Flange Nut M10	4





Position SWB no drill!



Position LWB need to drill!

5220 – CITROEN BERLINGO 2008 - PRESENT

