



**VEPRO OY**

## 3126 VW CRAFTER 2017- / MAN TGE, ALL MODELS \*\* FITTING INSTRUCTIONS

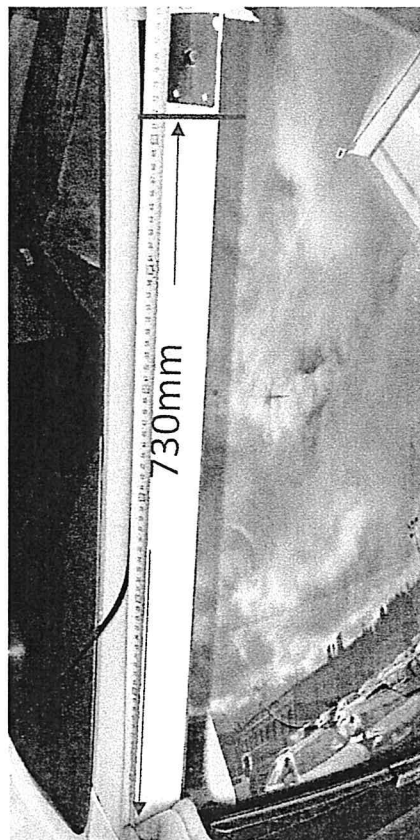
To mount this product you will need Sikaflex 252 glue, Sikaflex primer and Sikaflex cleaner (not supplied with the kit).

1. Place the side bracket on the A-pillar so that the bottom side is 730mm  $\pm$ 5mm from the bottom line of the A-pillar (*picture 1*) and there is 2mm gap between inner side of the bracket and the A-pillar (*picture 2*). Check that the hole in the middle of side bracket is toward window.

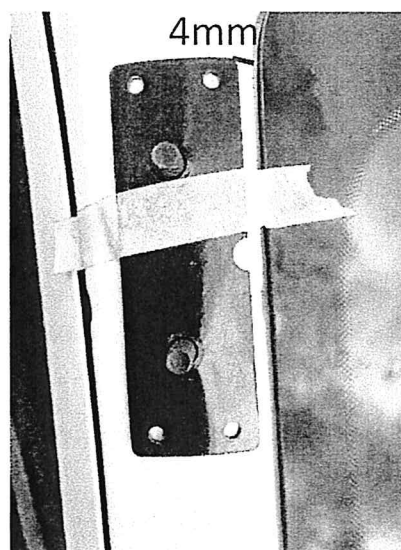
2. Mark the hole positions and drill the holes with 4,0 mm bit.

3. Mark the area of the side bracket. Clean the area with cleaner and the backside of the bracket with cleaner.

4. Apply the primer on the cleaned areas and let it react for 15 minutes.



*picture 1*



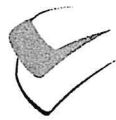
*picture 2*

Address  
Tehtaankatu 21  
11710 RIIHIMÄKI  
FINLAND

Telephone  
+ 358 19 724 00

Fax  
+ 358 19 720 765

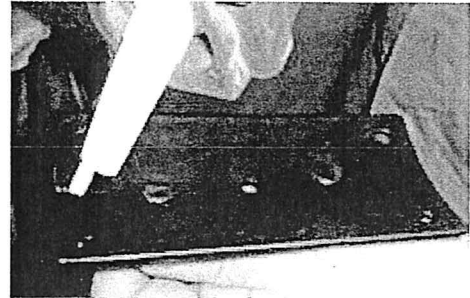
mail@vepro.fi  
www.vepro.fi  
FI09001798



**VEPRO OY**

## 3126 VW CRAFTER 2017- / MAN TGE, ALL MODELS \*\* FITTING INSTRUCTIONS

5. Apply Sikaflex 252 on the backside of the side bracket and place it on the A-pillar (at least 3 wide stripes). (picture 3)



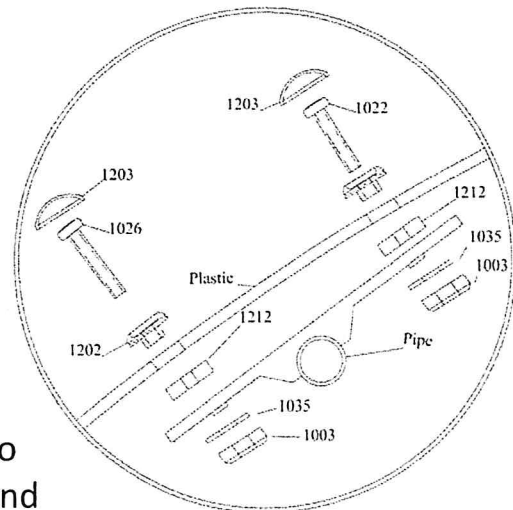
picture 3

6. Apply Sikaflex 252 into the holes and mount the side bracket on the A-pillar with 4,8x19mm screws.

7. Seal the sides of the mounting plate with Sikaflex.

8. Mount the main bracket on the side brackets by using the 8mm washers and nylock nuts.

9. Mount the visor on the main bracket according to the drawing. (picture 4)



picture 4

10. Mount the warning label on a place where the driver can see it. Remember to tighten all screws after few hours drive and every 6 months.

### WARNING!

The speed limit for the vehicle with the visor mounted is 130 km/h. If you drive constantly faster than 130 km/h the visor may tear off!

**ANY NON-COMPLIANCE WITH THESE REGULATIONS CAUSE NO RESPONSIBILITY TO THE MANUFACTURER OF ANY COSTS AND DAMAGES.**

Address  
Tehtaankatu 21  
11710 RIIHIMÄKI  
FINLAND

Telephone  
+ 358 19 724 00

Fax  
+ 358 19 720 765

mail@vepro.fi  
www.vepro.fi  
FI09001798